

Eastmark High School Road Improvements



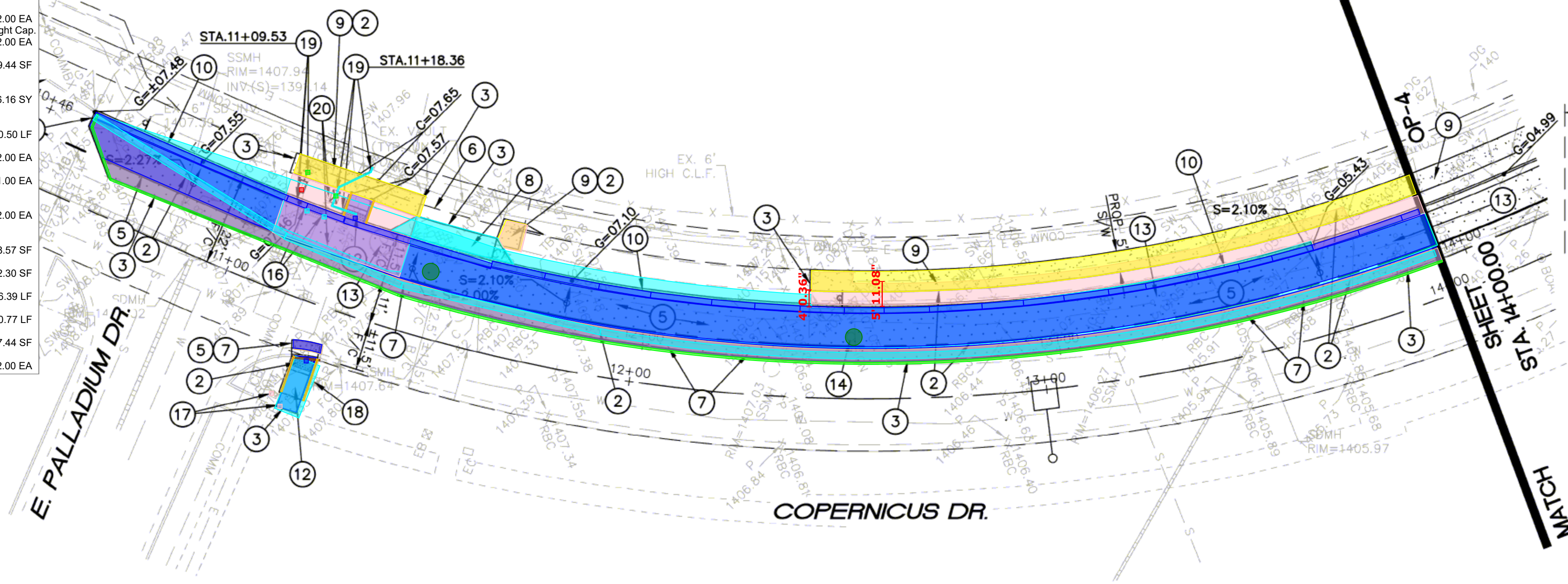
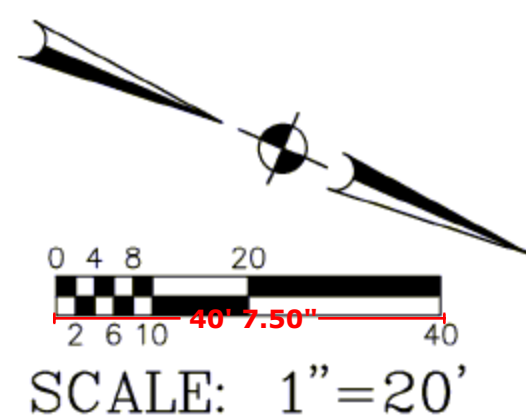
BO#4 Construct a left-turn deceleration lane on Point 22 Boulevard at Access D

BO#1 Widening of Copernicus from the school driveway to Point Twenty-Two Boulevard.

BO#3 Install a traffic signal at the intersection of Ray Road/Access A (student lot).

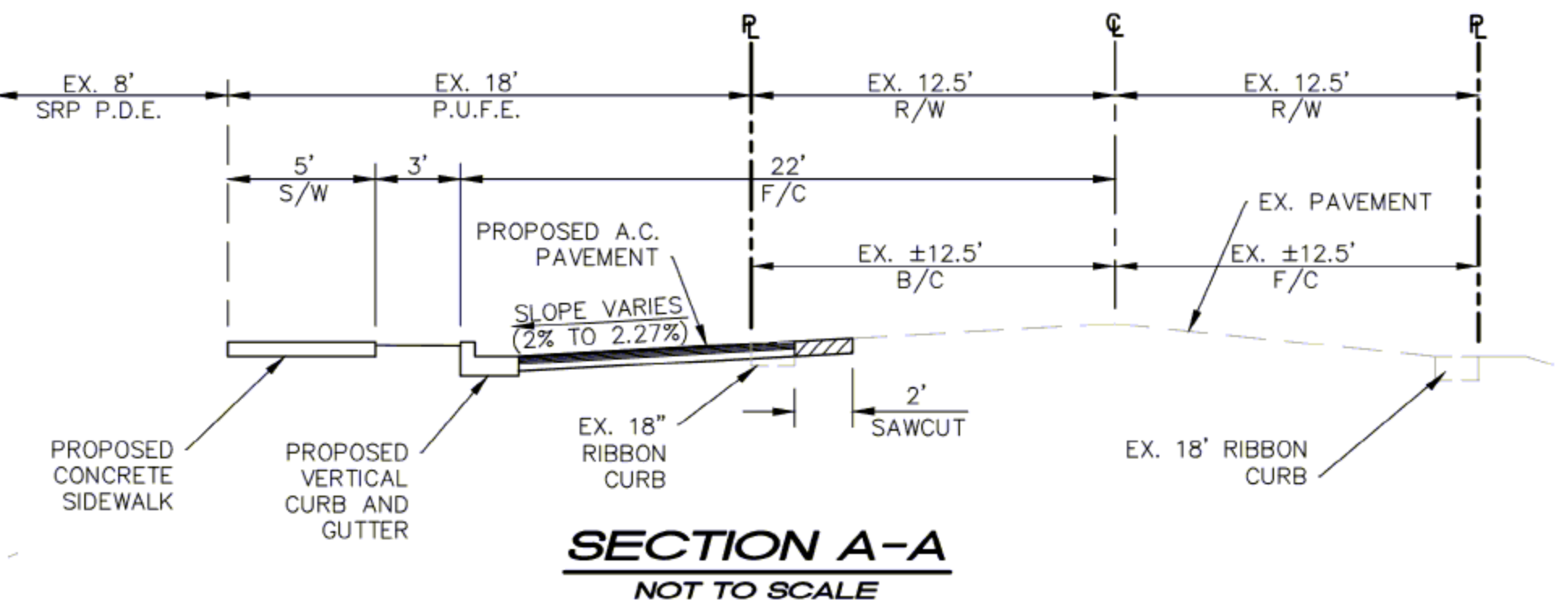
BO#2 Construct a right-turn deceleration lane on Ray Road at Copernicus

001	Demolition			
	#1 - KN#2 Demo Ribbon Curb			
	1 Length			335.44 LF
	#1 - KN#2 Sawcut and Remove Existing Concrete Curb			
	1 Length			6.33 LF
	#1 - KN#2 Sawcut and Remove Existing Concrete Sidewalk			
	1 Area (minus Backout areas)			1,464.80 SF
	#1 - KN#2 Sawcut for Asphalt Demo			
	1 Length			344.32 LF
	#1 - KN#2/7 Sawcut and Remove Existing AC Pavement (2' Min)			
	1 Area (minus Backout areas)			1,248.27 SF
	#1 - KN#14 Remove / Salvage Existing Signage			
	1 Count			2.00 EA
	#1 - KN#16 Remove Existing Catch Basin, Remove Existing Storm Drain Pipe as Required. Install Water Tight Catch Basin			2.00 EA
	#1 - KN#13 Remove landscape for new construction			
	1 Area (minus Backout areas)			3,149.44 SF
007	Earthwork & Paving			
	#1 - KN#5 Install AC Pavement (3.5" over 6" ABC) to Match Existing			
	1 Area (minus Backout areas)			406.16 SY
	Site Utilities (Domestic Water)			
008	Site Utilities (Domestic Water)			
	#1 - KN#19 Install New 2" Copper Pipe (Type K) as required			
	1 Length			20.50 LF
	#1 - KN#19 Relocate Existing 2" Water Meter and Meter Box			
	1 Count			2.00 EA
	#1 - KN#19 Remove Existing 2" Copper Pipe and Install New 2" Copper Pipe (Type K) as required			
	1 Count			1.00 EA
012	Traffic Signals			
	#1 - KN#17 Relocate Existing Electrical Box			
	1 Count			2.00 EA
019	Site Concrete			
	#1 - KN#8 New Residential Drive Way Entrance			
	1 Area (minus Backout areas)			128.57 SF
	#1 - KN#9 New Concrete Sidewalk			
	1 Area (minus Backout areas)			902.30 SF
	#1 - KN#10 Concrete Vertical Curb and Gutter			
	1 Length			326.39 LF
	#1 - KN#12 Concrete Curb at New Ramps			
	1 Length			30.77 LF
	#1 - KN#12 Concrete Sidewalk Ramp			
	1 Area (minus Backout areas)			97.44 SF
	#1 - KN#12 Truncated Domes at New Ramps			
	1 Count			2.00 EA



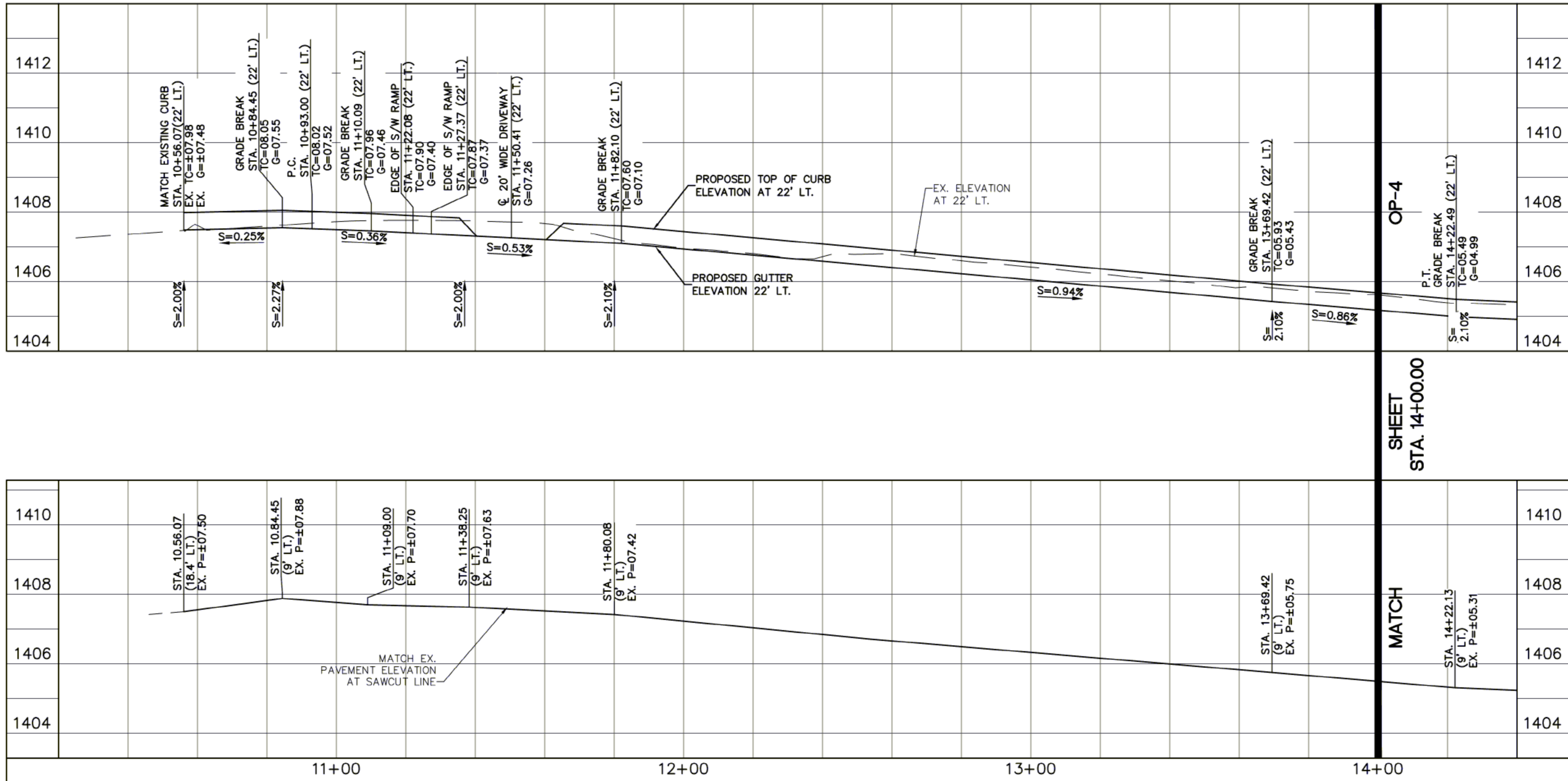
Line Table		
Line #	Length	Direction
L1	36.94'	N00° 29' 40.20"E
L2	331.75'	N46° 48' 09.28"W

Curve Table			
Curve #	Length	Radius	Delta
C1	311.42'	377.61	047.25
C2	42.40'	417.89	005.81



OFFSITE PAVING CONSTRUCTION NOTES:

- (1) INSTALL 18" WIDE CONCRETE RIBBON CURB (MAG STANDARD DETAIL NO. 220-1, TYPE B MODIFIED).
- (2) SAWCUT AND REMOVE EXISTING A.C. PAVEMENT, CONCRETE RIBBON CURB, CONCRETE PAVEMENT, CONCRETE VERTICAL CURB, GUTTER AND SIDEWALK AS REQUIRED FOR NEW CONSTRUCTION.
- (3) MATCH EXISTING A.C. PAVEMENT, CONCRETE SINGLE CURB, CONCRETE VERTICAL CURB, GUTTER AND SIDEWALK ELEVATION AND LOCATION.
- (4) EXISTING CONCRETE SINGLE CURB, RIBBON CURB OR CONCRETE VERTICAL CURB AND GUTTER TO REMAIN. PROTECT FROM DAMAGE.
- (5) INSTALL ASPHALTIC CONCRETE PAVEMENT (3.5" A.C. (R-1/2") OVER 6" A.B.C. OVER COMPACTED SUBGRADE) PER CITY OF MESA STANDARD DETAIL NO. M-19-01.
- (6) PROTECT EXISTING 7" THICK MAG AA CONCRETE PAVEMENT FROM DAMAGE.
- (7) SAWCUT AND REMOVE A MINIMUM 2' OF EXISTING A.C. PAVEMENT.
- (8) CONSTRUCT RESIDENTIAL DRIVEWAY ENTRANCE—TYPE 2 (DETACHED SIDEWALK). CITY OF MESA DETAIL NO. M-40.02.
- (9) CONSTRUCT CONCRETE SIDEWALK (MAG STANDARD DETAIL NO. 230).
- (10) INSTALL CONCRETE VERTICAL CURB AND GUTTER (MAG STANDARD DETAIL NO. 220-1, TYPE A).
- (11) CONSTRUCT CURB TRANSITION (SEE DETAIL ON SHEET OP-5).
- (12) INSTALL SIDEWALK RAMP TYPE D (CITY OF MESA STANDARD DETAIL NO. M-44.05). MODIFY TO BE 5' WIDE AND HAVE NO ROUNDED CORNERS AT CURB INTERSECTIONS WITH STREET CURBS.
- (13) REMOVE EXISTING TREES, SHRUBS, LANDSCAPE MATERIAL AS REQUIRED FOR NEW CONSTRUCTION.
- (14) REMOVE AND SALVAGE EXISTING SIGNS. REMOVE EXISTING POST, AND FOOTING. SEE SIGNAGE AND STRIPING PLANS FOR REINSTALLATION.
- (15) REMOVE AND SALVAGE EXISTING ANGULAR RIP—RAP AS REQUIRED FOR REGRADING OF NEW SWALE. REGRADE SWALE TO THE ELEVATIONS INDICATED. REINSTALL ANGULAR RIP—RAP.
- (16) REMOVE EXISTING CATCH BASIN, REMOVE EXISTING STORM DRAIN PIPE AS REQUIRED. INSTALL WATERTIGHT CAP.
- (17) RELOCATE EXISTING ELECTRICAL BOXES AS REQUIRED FOR NEW CONSTRUCTION.
- (18) PROTECT EXISTING STREET LIGHT POLE AND BASE FROM DAMAGE.
- (19) RELOCATE EXISTING 2" WATER METER AND METER BOX FOR NEW CONSTRUCTION. REMOVE EXISTING 2" COPPER PIPE AND INSTALL NEW 2" COPPER PIPE (TYPE K) AS REQUIRED. RECONNECT TO EXISTING WATER LINE WITH NECESSARY AND APPROPRIATE FITTINGS.
- (20) EXISTING COMMUNICATION AND ELECTRICAL UTILITY LINES TO BE PROTECTED AND TO REMAIN IN PLACE. FIELD VERIFY ELEVATION AND LOCATION PRIOR TO CONSTRUCTION.



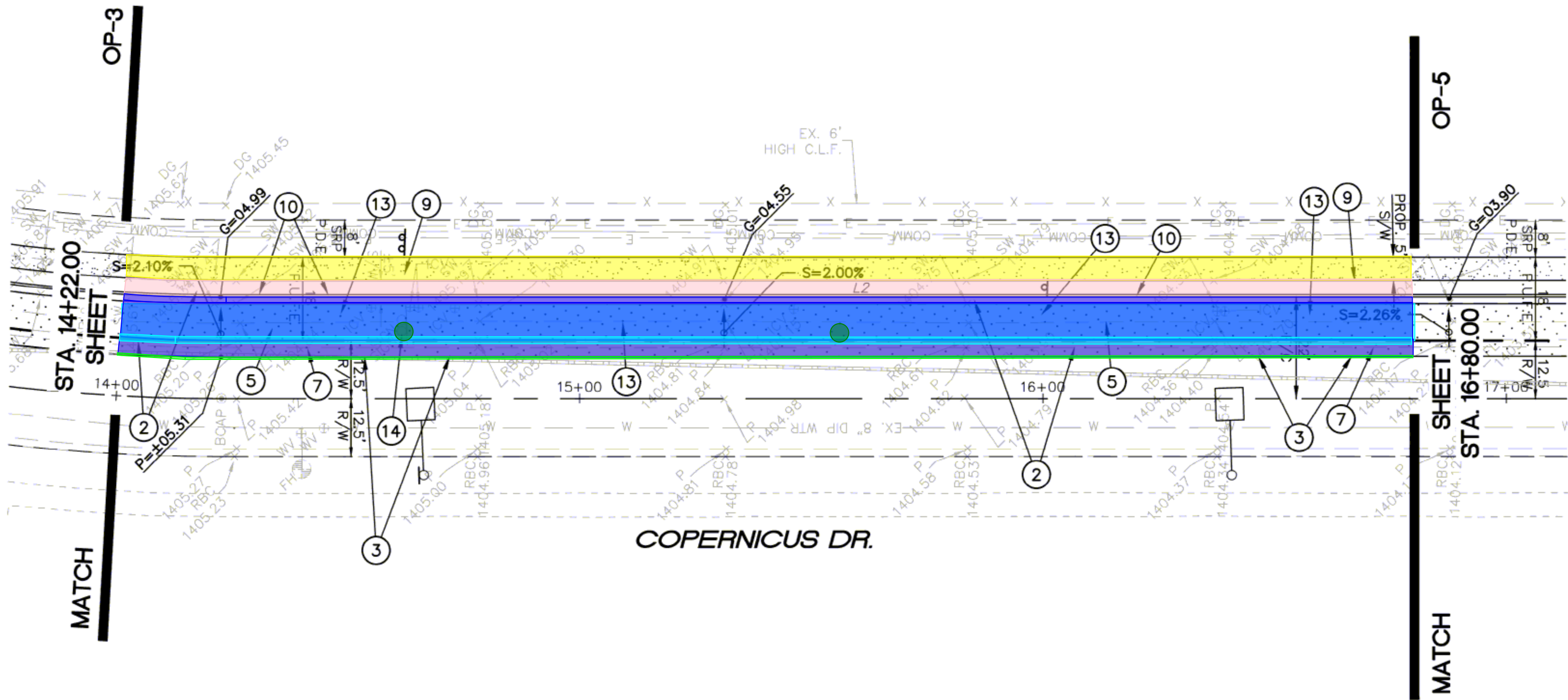
HORIZONTAL SCALE: 1"=20'
VERTICAL SCALE: 1"=2'

OFFSITE PAVING PLAN	
<i>QUEEN CREEK UNIFIED SCHOOL DISTRICT #93</i> <i>QUEEN CREEK HIGH SCHOOL -</i> <i>COPERNICUS WIDENING</i>	

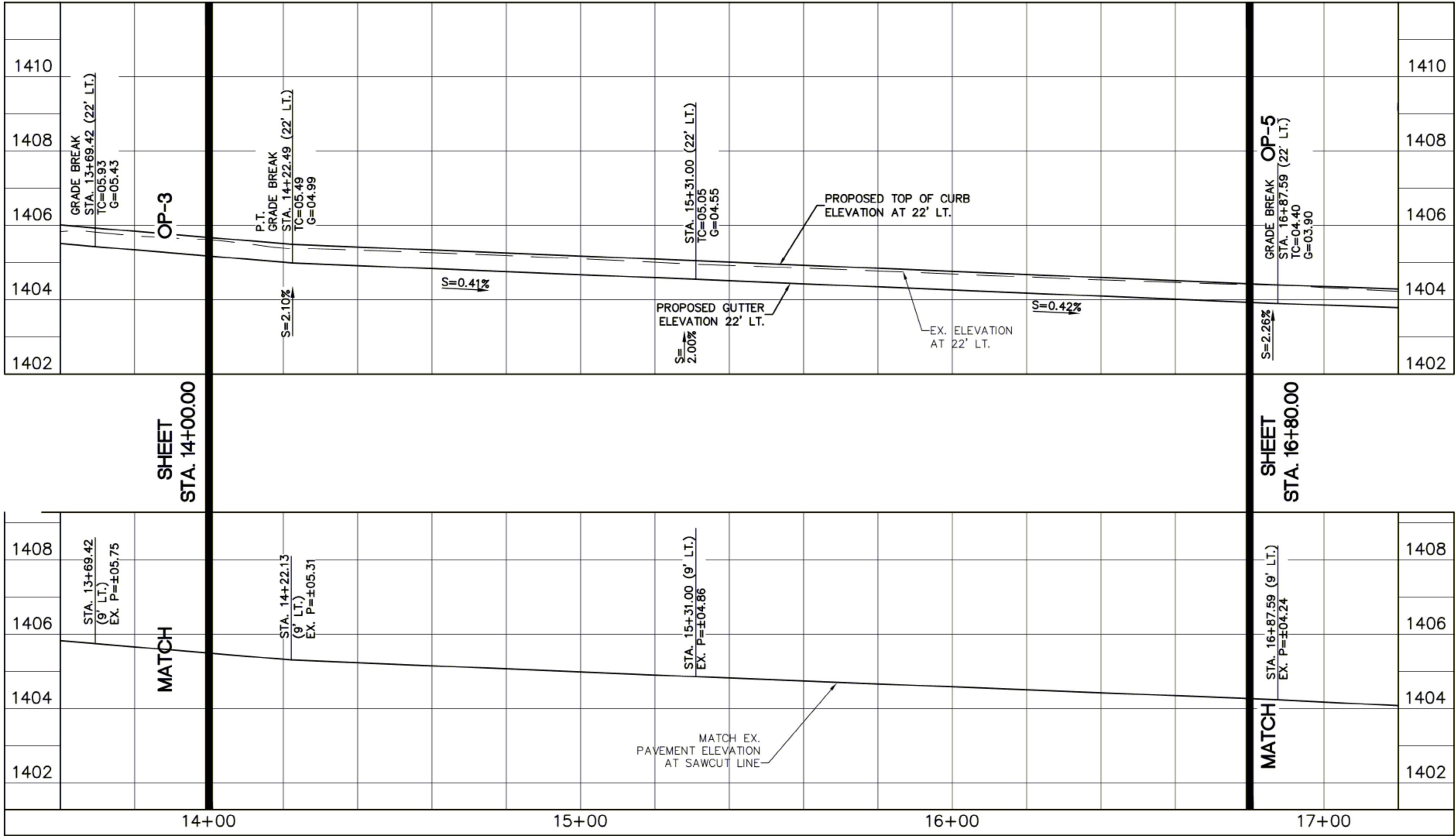
DRAWING STATUS	SHEET	OF	OP-3
2ND CITY SUBMITTAL			
DATE: 03-23-21			



001 Demolition	
#1 - KN#2 Demo Ribbon Curb	278.84 LF
1 Length	
#1 - KN#2 Sawcut and Remove Existing Concrete Sidewalk	1,416.34 SF
1 Area (minus Backout areas)	
#1 - KN#2 Sawcut for Asphalt Demo	279.67 LF
1 Length	
#1 - KN#2/7 Sawcut and Remove Existing AC Pavement (2" Min)	1,039.48 SF
1 Area (minus Backout areas)	
#1 - KN#14 Remove / Salvage Existing Signage	2.00 EA
1 Count	
#1 KN#13 Remove landscape for new construction	2,221.82 SF
1 Area (minus Backout areas)	
007 Earthwork & Paving	
#1 - KN#5 Install AC Pavement (3.5" over 6" ABC) to Match Existing	366.80 SY
1 Area (minus Backout areas)	
019 Site Concrete	
#1 - KN#9 New Concrete Sidewalk	1,440.12 SF
1 Area (minus Backout areas)	
#1 - KN#10 Concrete Vertical Curb and Gutter	278.13 LF
1 Length	

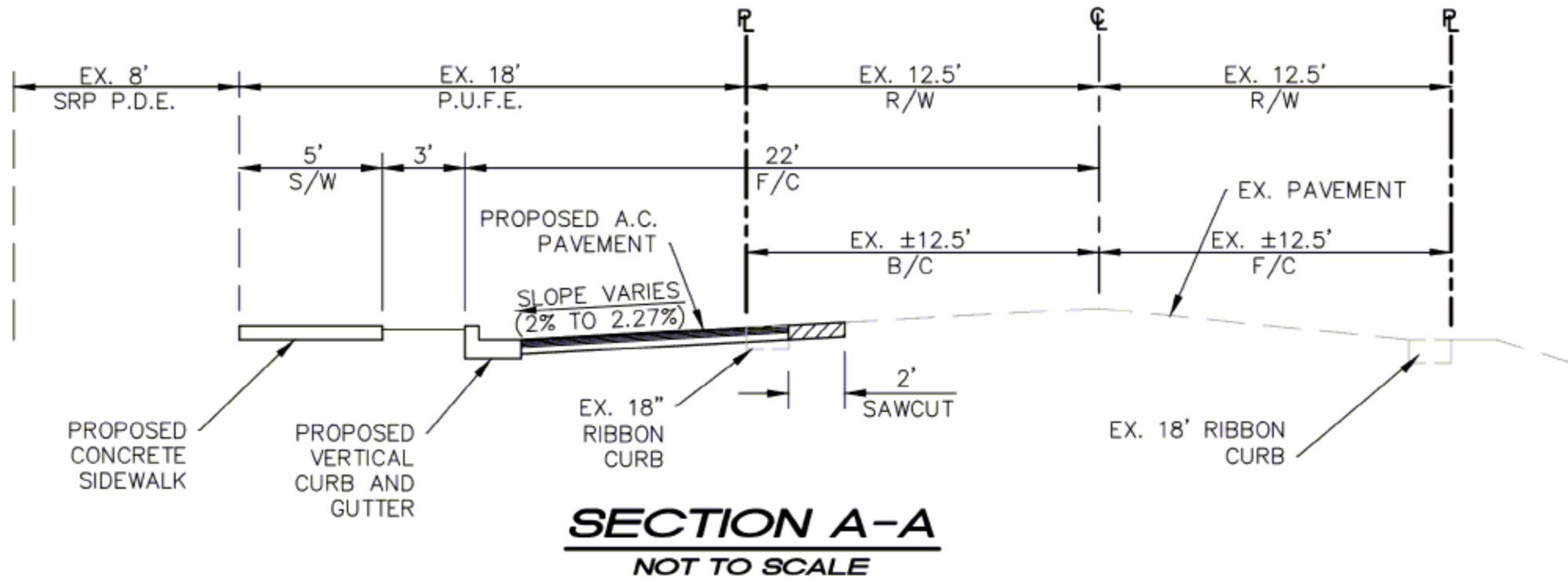


COPERNICUS DRIVE



Line Table		
Line #	Length	Direction
L1	36.94'	N00° 29' 40.20"E
L2	331.75'	N46° 48' 09.28"W

Curve Table			
Curve #	Length	Radius	Delta
C2	42.40'	417.89	005.81
C1	311.42'	377.61	047.25

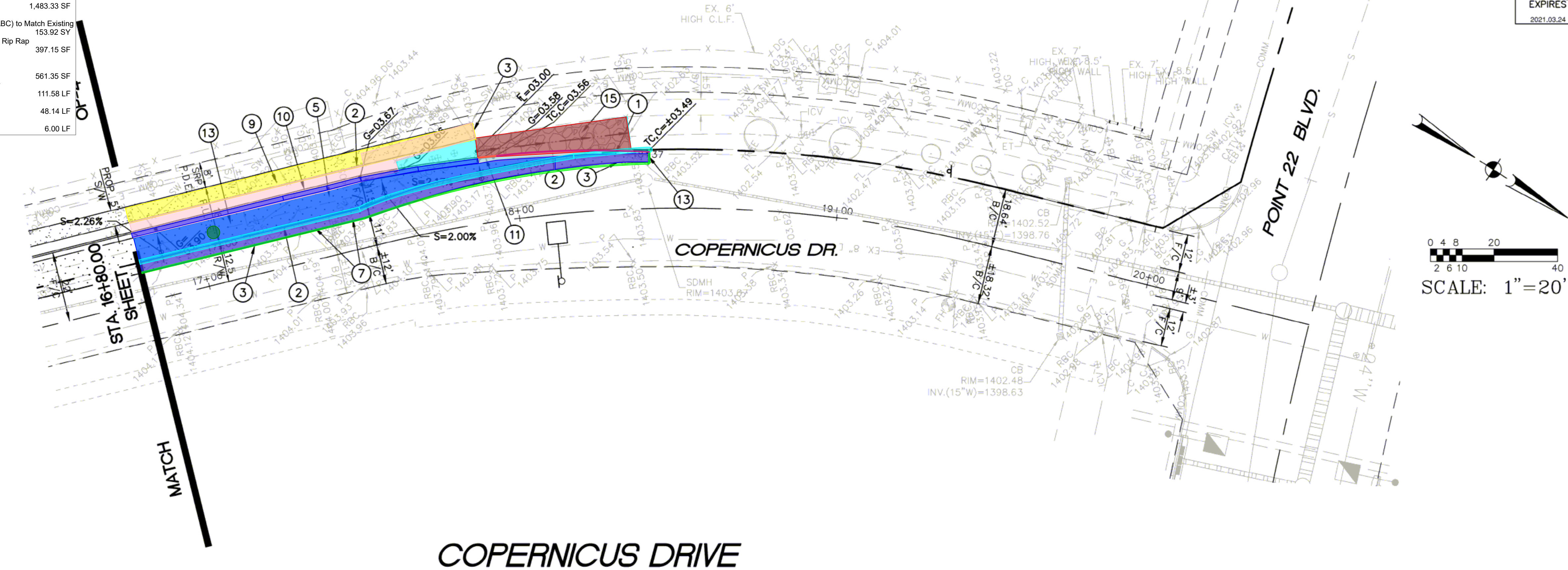


OFFSITE PAVING PLAN			
QUEEN CREEK UNIFIED SCHOOL DISTRICT #95			
QUEEN CREEK HIGH SCHOOL- COPERNICUS WIDENING			
DRAWING STATUS	SHEET	OF	OP-4
2ND CITY SUBMITTAL	4	15	
DATE: 03-23-21			



HORIZONTAL SCALE: 1"=20'
VERTICAL SCALE: 1"=2'

001 Demolition	
#1 - KN#2 Demo Ribbon Curb	165.65 LF
1 Length	
#1 - KN#2 Sawcut and Remove Existing Concrete Sidewalk	671.41 SF
1 Area (minus Backout areas)	
#1 - KN#2 Sawcut for Asphalt Demo	168.05 LF
1 Length	
#1 - KN#2/7 Sawcut and Remove Existing AC Pavement (2" Min)	550.34 SF
1 Area (minus Backout areas)	
#1 - KN#14 Remove / Salvage Existing Signage	1.00 EA
1 Count	
#1 KN#13 Remove landscape for new construction	1,483.33 SF
1 Area (minus Backout areas)	
007 Earthwork & Paving	
#1 - KN#5 Install AC Pavement (3.5" over 6" ABC) to Match Existing	153.92 SY
1 Area (minus Backout areas)	
#1 - KN#15 NEW Remove / Salvage / Replace Rip Rap	397.15 SF
1 Area (minus Backout areas)	
019 Site Concrete	
#1 - KN#9 New Concrete Sidewalk	561.35 SF
1 Area (minus Backout areas)	
#1 - KN#10 Concrete Vertical Curb and Gutter	111.58 LF
1 Length	
#1 - KN#11 18" Wide Concrete Ribbon Curb	48.14 LF
1 Length	
#1 - KN#11 Construct Curb Transition	6.00 LF
1 Length	

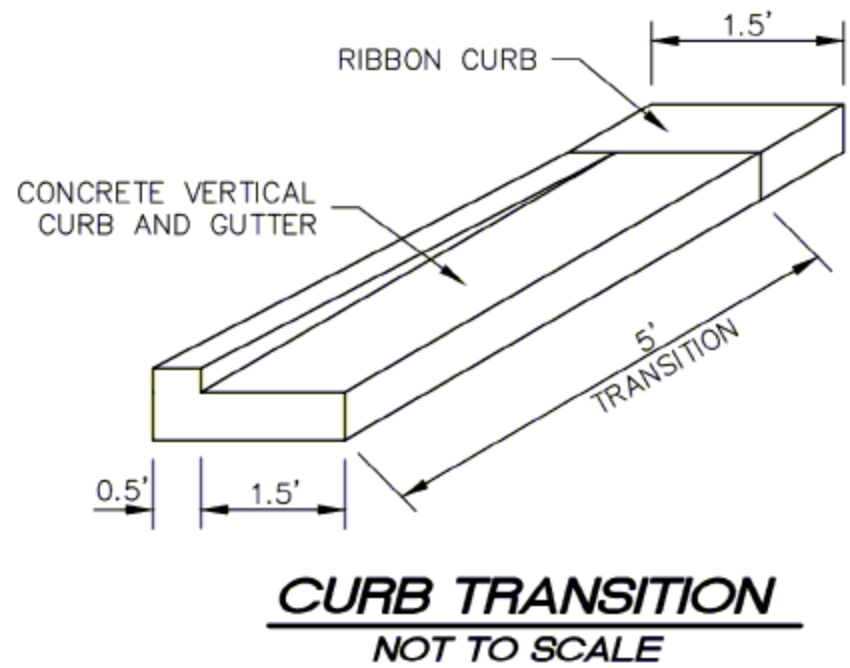


OFFSITE PAVING CONSTRUCTION NOTES:

1. INSTALL 18" WIDE CONCRETE RIBBON CURB (MAG STANDARD DETAIL NO 220-1, TYPE B MODIFIED).
2. SAWCUT AND REMOVE EXISTING A.C. PAVEMENT, CONCRETE RIBBON CURB, CONCRETE PAVEMENT, CONCRETE VERTICAL CURB, GUTTER AND SIDEWALK AS REQUIRED FOR NEW CONSTRUCTION.
3. MATCH EXISTING A.C. PAVEMENT, CONCRETE SINGLE CURB, CONCRETE VERTICAL CURB, GUTTER AND SIDEWALK ELEVATION AND LOCATION.
4. EXISTING CONCRETE SINGLE CURB, RIBBON CURB OR CONCRETE VERTICAL CURB AND GUTTER TO REMAIN. PROTECT FROM DAMAGE.
5. INSTALL ASPHALTIC CONCRETE PAVEMENT (3.5" A.C. (R-1/2") OVER 6" A.B.C. OVER COMPACTED SUBGRADE) PER CITY OF MESA STANDARD DETAIL NO. M-19-01.
6. PROTECT EXISTING 7" THICK MAG AA CONCRETE PAVEMENT FROM DAMAGE.
7. SAWCUT AND REMOVE A MINIMUM 2' OF EXISTING A.C. PAVEMENT.
8. CONSTRUCT RESIDENTIAL DRIVEWAY ENTRANCE-TYPE 2 (DETACHED SIDEWALK). CITY OF MESA DETAIL NO. M-40.02.
9. CONSTRUCT CONCRETE SIDEWALK (MAG STANDARD DETAIL NO. 230).
10. INSTALL CONCRETE VERTICAL CURB AND GUTTER (MAG STANDARD DETAIL NO. 220-1, TYPE A).
11. CONSTRUCT CURB TRANSITION (SEE DETAIL ON SHEET OP-5).
12. INSTALL SIDEWALK RAMP TYPE D (CITY OF MESA STANDARD DETAIL NO. M-44.05). MODIFY TO BE 5' WIDE AND HAVE NO ROUNDED CORNERS AT CURB INTERSECTIONS WITH STREET CURBS.
13. REMOVE EXISTING TREES, SHRUBS, LANDSCAPE MATERIAL AS REQUIRED FOR NEW CONSTRUCTION.
14. REMOVE AND SALVAGE EXISTING SIGNS. REMOVE EXISTING POST, AND FOOTING. SEE SIGNAGE AND STRIPING PLANS FOR REINSTALLATION.
15. REMOVE AND SALVAGE EXISTING ANGULAR RIP-RAP AS REQUIRED FOR REGRADING OF NEW SWALE. REGRADE SWALE TO THE ELEVATIONS INDICATED. REINSTALL ANGULAR RIP-RAP.
16. REMOVE EXISTING CATCH BASIN, REMOVE EXISTING STORM DRAIN PIPE AS REQUIRED. INSTALL WATERTIGHT CAP.
17. RELOCATE EXISTING ELECTRICAL BOXES AS REQUIRED FOR NEW CONSTRUCTION.
18. PROTECT EXISTING STREET LIGHT POLE AND BASE FROM DAMAGE.
19. RELOCATE EXISTING 2" WATER METER AND METER BOX FOR NEW CONSTRUCTION. REMOVE EXISTING 2" COPPER PIPE AND INSTALL NEW 2" COPPER PIPE (TYPE K) AS REQUIRED. RECONNECT TO EXISTING WATER LINE WITH NECESSARY AND APPROPRIATE FITTINGS.
20. EXISTING COMMUNICATION AND ELECTRICAL UTILITY LINES TO BE PROTECTED AND TO REMAIN IN PLACE. FIELD VERIFY ELEVATION AND LOCATION PRIOR TO CONSTRUCTION.

Line Table		
Line #	Length	Direction
L1	36.94'	N00° 29' 40.20"E
L2	331.75'	N46° 48' 09.28"W

Curve Table			
Curve #	Length	Radius	Delta
C2	42.40'	417.89	005.81
C1	311.42'	377.61	047.25



OFFSITE PAVING PLAN			
QUEEN CREEK UNIFIED SCHOOL DISTRICT #95			
QUEEN CREEK HIGH SCHOOL-COPERNICUS WIDENING			
DRAWING STATUS	SHEET	OF	OP-5
2ND CITY SUBMITTAL	5	15	
DATE: 03-23-21			

HORIZONTAL SCALE: 1"=20'
VERTICAL SCALE: 1"=2'



001	Demolition		
#3	Demo Curbing		
1	Length	36.97	LF
#3	Demo Existing Concrete Sidewalk		
1	Area (minus Backout areas)	267.76	SF
007	Earthwork & Paving		
#3	Modify Asphalt for New Curbing		
1	Surface area (top or bottom)	1.63	SY
#3	Traffic Control		
1	Count	1.00	EA
019	Site Concrete		
#3	Concrete Sidewalk Ramp w/ Truncated Domes		
1	Area (minus Backout areas)	266.59	SF
#3	Misc Concrete adjustment Allowance		
1	Count	1.00	EA



HESS - ROUNTREE, INC.
CONSULTING ENGINEERS & LAND SURVEYORS
9831 SOUTH 51ST STREET, SUITE C110
PHOENIX, ARIZONA 85044 (480)496-0244

DES. <i>VR</i>	DRN. <i>ANM</i>	CKD. <i>PMJ</i>	JOB NO. <i>2302-18</i>
----------------	-----------------	-----------------	------------------------

OFFSITE PAVING CONSTRUCTION NOTES:

1. EXISTING COMMUNICATION VAULT TO BE RELOCATED. CONTRACTOR TO COORDINATE WITH THE UTILITY COMPANY FOR RELOCATION.
2. SAWCUT AND REMOVE EXISTING A.C. PAVEMENT. CONCRETE SINGLE CURB, CONCRETE VERTICAL CURB, GUTTER AND SIDEWALK AS REQUIRED FOR NEW CONSTRUCTION.
3. MATCH EXISTING A.C. PAVEMENT, CONCRETE VERTICAL CURB, GUTTER AND SIDEWALK ELEVATION AND LOCATION.
4. EXISTING CONCRETE SIDEWALK, CONCRETE VERTICAL CURB AND GUTTER, CONCRETE APRON, CONCRETE VALLEY GUTTER TO REMAIN. PROTECT FROM DAMAGE.
5. INSTALL ASPHALTIC CONCRETE PAVEMENT 5.5" A.C. (2" (1/2 INCH) RUBBER ASPHALT OVER 3.5" (3/4 INCH) OVER 10" A.B.C. OVER COMPACTED SUBGRADE (CITY OF MESA STANDARD DETAIL NO. M-19.01).
6. SEE UNITED CIVIL GROUP ENGINEERING PLANS FOR RELOCATION/MODIFICATION OF EXISTING TRAFFIC SIGNAL POLE, STREET LIGHTS, ELECTRICAL LINES AND ELECTRICAL BOXES.
7. EXISTING FIRE HYDRANT TO BE RELOCATED TO THE NEW LOCATION INDICATION. REPAINT AND TEST THE FIRE HYDRANT AS PER CITY OF MESA REQUIREMENTS.
8. INSTALL 6" DUCTILE IRON PIPE (PRESSURE CLASS 350) FIRE LINE POLYWRAP PER MAG SPECIFICATIONS SECTION 610.6.
9. CONSTRUCT CONCRETE SIDEWALK (MAG STANDARD DETAIL NO. 230).
10. INSTALL CONCRETE VERTICAL CURB AND GUTTER (MAG STANDARD DETAIL NO. 220-1, TYPE A).
11. INSTALL CONCRETE VALLEY GUTTER AND APRON (MAG STANDARD DETAIL NO. 240).
12. INSTALL DUAL CURB DIRECTIONAL SIDEWALK RAMPS, TYPE B-RETROFIT (CITY OF MESA STANDARD DETAIL NO. M-44.04.1).
13. REMOVE EXISTING TREES, SHRUBS, LANDSCAPE MATERIAL AS REQUIRED FOR NEW CONSTRUCTION.
14. FIELD VERIFY ELEVATION AND LOCATION OF EXISTING ELECTRICAL/COMMUNICATION LINE PRIOR TO CONSTRUCTION. PROTECT FROM DAMAGE.
15. CONNECT NEW 6" FIRE LINE TO EXISTING 6" FIRE LINE. FIELD VERIFY LOCATION AND ELEVATION OF EXISTING FIRE LINE PRIOR TO THE START OF CONSTRUCTION.
16. STRAIGHT GRADE FROM 1" BELOW TOP OF CONCRETE SIDEWALK TO MATCH EXISTING GRADE WITH A MAXIMUM 5:1 SLOPE. REPLACE NEW DG, SHRUBS, PLANTS, TREE, IRRIGATION AS REQUIRED PER NEW CONSTRUCTION.
17. INSTALL SIDEWALK RAMP, TYPE B-RETROFIT (CITY OF MESA STANDARD DETAIL NO. M-44.04.1). MODIFIED AS SHOWN.
18. INSTALL SIDEWALK RAMP, TYPE B-RETROFIT (CITY OF MESA STANDARD DETAIL NO. M-44.05).
19. REMOVE EXISTING TREE.

NOTE:

1. ALL EXISTING IRRIGATION LINES, BOXES, VALVES TO BE MOVED OUT OF THE NEW WORK AREA AND MODIFIED AS REQUIRED TO PROVIDE 100% COVERAGE TO ALL VEGETATION POST CONSTRUCTION.
2. SEE SIGNING AND STRIPING PLANS BY UNITED CIVIL GROUP FOR NEW SIGNING AND STRIPING AND BLACKOUT OF EXISTING STRIPING AND RELOCATION/REMOVAL OF EXISTING SIGNING.

OFFSITE PAVING PLAN

QUEEN CREEK UNIFIED SCHOOL DISTRICT NO. 95

OFFSITE IMPROVEMENTS AT EASTMARK HIGH SCHOOL

DRAWING STATUS		SHEET	OF
PROGRESS SET			
DATE: 06-27-23			
		3	4

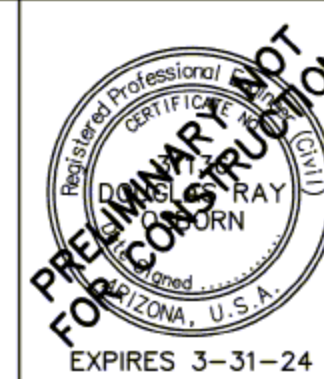
OP-3



- 001 Demolition
- #2 - Demo Curbing Length 384.57 LF
 - #2 - KN13 Demo Existing Landscaping 2,339.21 SF
 - #2 Demo Existing Sidewalk 2,446.56 SF
 - #2 Demo Valley Gutter 252.77 SF
 - #2-KN#2 Remove existing pavement 2,135.28 SF
 - #2-KN#13 Remove existing trees, shrubs, landscape material 4.00 EA
- 007 Earthwork & Paving
- #2 - KN#5 Install AC Pavement (3.5" over 6" ABC) to Match Existing 602.73 SY
 - #2 - Traffic Control Count 1.00 EA
- 008 Site Utilities (Fire Water)
- #2 - KN#15 Connect new 6" Fireline to Existing 6" fireline Segment Count 1.00 EA
 - #2 - KN#7 - Relocate Fire Hydrant Count 1.00 EA
 - #2 - KN#6 Install 6" Ductile iron pipe fireline polywrap Length 19.35 LF
- 012 Traffic Signals
- #2 - KN#1 Existing Vault to be relocated Count 1.00 EA
 - #2-KN#14 Location of electrical/communication line prior to construction 3.00 EA
- 019 Site Concrete
- #2 KN#9 - 6" Sidewalk Extension 1 Surface area (top or bottom) 40.83 LF
 - #2 - KN#2 - Curb & Gutter 262.13 SF
 - #2 - KN#11 Install concrete vertical Curb and Gutter. 1 Length 336.25 LF
 - #2-KN#11 Install Valley gutter & Apron 1 Area (minus Backout areas) 341.45 SF
 - #2-KN#12 Concrete sidewalk Ramp 1 Area (minus Backout areas) 141.74 SF

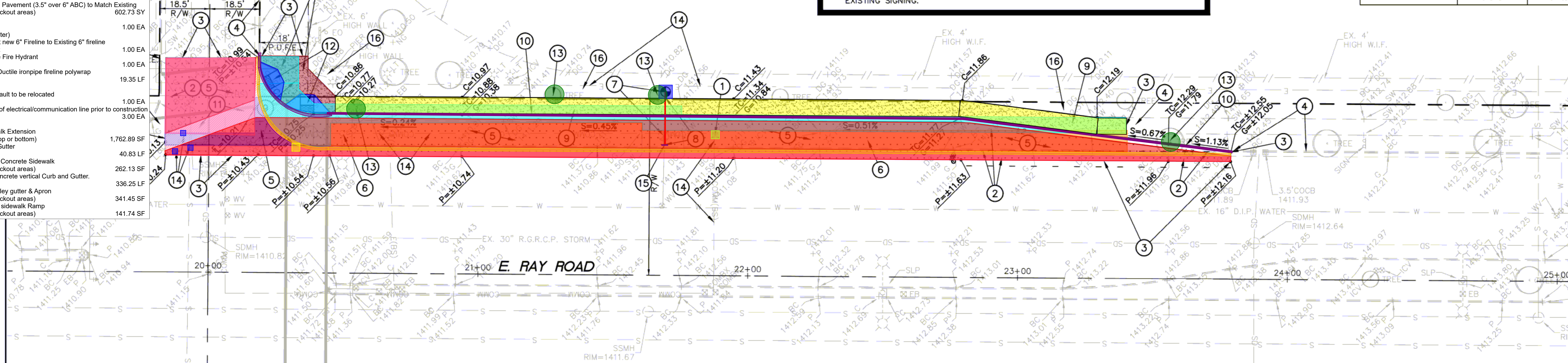
NOTE:

- ALL EXISTING IRRIGATION LINES, BOXES, VALVES TO BE MOVED OUT OF THE NEW WORK AREA AND MODIFIED AS REQUIRED TO PROVIDE 100% COVERAGE TO ALL VEGETATION POST CONSTRUCTION.
- SEE SIGNING AND STRIPING PLANS BY UNITED CIVIL GROUP FOR NEW SIGNING AND STRIPING AND BLACKOUT OF EXISTING STRIPING AND RELOCATION/REMOVAL OF EXISTING SIGNING.



HESS - ROUNTREE, INC.
CONSULTING ENGINEERS & LAND SURVEYORS
9831 SOUTH 51ST STREET, SUITE C110
PHOENIX, ARIZONA 85044 (480)496-0244

DES. **VR** DRN. **ANM** CKD. **PMJ** JOB NO. **2302-18**



Line Table		
Line #	Length	Direction
L2	100.713	N82° 48' 09.88"W
L3	100.713	N82° 48' 09.88"W
L1	240.000	S89° 37' 25.12"E

Curve Table			
Curve #	Length	Radius	Delta
C1	32.257	20.500	090.1563

OFFSITE PAVING CONSTRUCTION NOTES:

- EXISTING COMMUNICATION VAULT TO BE RELOCATED. CONTRACTOR TO COORDINATE WITH THE UTILITY COMPANY FOR RELOCATION.
- SAWCUT AND REMOVE EXISTING A.C. PAVEMENT. CONCRETE SINGLE CURB, CONCRETE VERTICAL CURB, GUTTER AND SIDEWALK AS REQUIRED FOR NEW CONSTRUCTION.
- MATCH EXISTING A.C. PAVEMENT, CONCRETE VERTICAL CURB, GUTTER AND SIDEWALK ELEVATION AND LOCATION.
- EXISTING CONCRETE SIDEWALK, CONCRETE VERTICAL CURB AND GUTTER, CONCRETE APRON, CONCRETE VALLEY GUTTER TO REMAIN. PROTECT FROM DAMAGE.
- INSTALL ASPHALTIC CONCRETE PAVEMENT 5.5" A.C. (2" (1/2 INCH) RUBBER ASPHALT OVER 3.5" (3/4 INCH) OVER 10" A.B.C. OVER COMPACTED SUBGRADE (CITY OF MESA STANDARD DETAIL NO. M-19.01).
- SEE UNITED CIVIL GROUP ENGINEERING PLANS FOR RELOCATION/MODIFICATION OF EXISTING TRAFFIC SIGNAL POLE, STREET LIGHTS, ELECTRICAL LINES AND ELECTRICAL BOXES.
- EXISTING FIRE HYDRANT TO BE RELOCATED TO THE NEW LOCATION INDICATION. REPAINT AND TEST THE FIRE HYDRANT AS PER CITY OF MESA REQUIREMENTS.
- INSTALL 6" DUCTILE IRON PIPE (PRESSURE CLASS 350) FIRE LINE POLYWRAP PER MAG SPECIFICATIONS SECTION 610.6.
- CONSTRUCT CONCRETE SIDEWALK (MAG STANDARD DETAIL NO. 230).
- INSTALL CONCRETE VERTICAL CURB AND GUTTER (MAG STANDARD DETAIL NO. 220-1, TYPE A).
- INSTALL CONCRETE VALLEY GUTTER AND APRON (MAG STANDARD DETAIL NO. 240).
- INSTALL DUAL CURB DIRECTIONAL SIDEWALK RAMPS, TYPE B-RETROFIT (CITY OF MESA STANDARD DETAIL NO. M-44.04.1).
- REMOVE EXISTING TREES, SHRUBS, LANDSCAPE MATERIAL AS REQUIRED FOR NEW CONSTRUCTION.
- FIELD VERIFY ELEVATION AND LOCATION OF EXISTING ELECTRICAL/COMMUNICATION LINE PRIOR TO CONSTRUCTION. PROTECT FROM DAMAGE.
- CONNECT NEW 6" FIRE LINE TO EXISTING 6" FIRE LINE. FIELD VERIFY LOCATION AND ELEVATION OF EXISTING FIRE LINE PRIOR TO THE START OF CONSTRUCTION.
- STRAIGHT GRADE FROM 1" BELOW TOP OF CONCRETE SIDEWALK TO MATCH EXISTING GRADE WITH A MAXIMUM 5:1 SLOPE. REPLACE NEW DG, SHRUBS, PLANTS, TREE, IRRIGATION AS REQUIRED PER NEW CONSTRUCTION.

OFFSITE PAVING PLAN

QUEEN CREEK UNIFIED SCHOOL DISTRICT NO. 95

OFFSITE IMPROVEMENTS AT
EASTMARK HIGH SCHOOL

DRAWING STATUS	SHEET	OF	OP-4
PROGRESS SET	4	4	
DATE: 06-27-23			



001 Demolition	
#5 - KN#2 Remove 2" Asphalt from Middle Curb	1,286.72 SF
1 Surface area (top or bottom)	
#5 - KN#2 Sawcut Asphalt	654.02 LF
1 Length	
#5 - KN#2 Remove existing concrete single curb	645.11 LF
1 Length	
#5 - KN#7 Remove Existing trees.	1.00 EA
1 Count	
#5 - KN#9 - Demo Landscape Cover and Planting at Center Median	2,746.97 SF
1 Area (minus Backout areas)	
007 Earthwork & Paving	
#5 - KN#1 Adjust existing Brass cap	2.00 EA
1 Count	
#5 - KN#5 - Asphalt 3ACI(6ABC)/Compacted Subgrade	463.08 SY
1 Area (minus Backout areas)	
008 Site Utilities (Trench & BF for Gas)	
#5 - KN#8 - Location of existing Gas/Water line prior to construction	3.00 EA
1 Count	
012 Traffic Signals	
#5 - KN#6 Existing street light to remain	1.00 EA
1 Count	
019 Site Concrete	
#5 - New Concrete Bullnose	2.00 EA
1 Count	
#5 - New Curb and Gutter	41.70 LF
1 Length	

LOCATION LINES, BOXES, VALVES TO BE MOVED OUT OF THE NEW
DIFIED AS REQUIRED TO PROVIDE 100% COVERAGE TO ALL
ONSTRUCTION.

STRIPING PLANS BY UNITED CIVIL GROUP FOR NEW SIGNING AND
OUT OF EXISTING STRIPING AND RELOCATION/REMOVAL OF

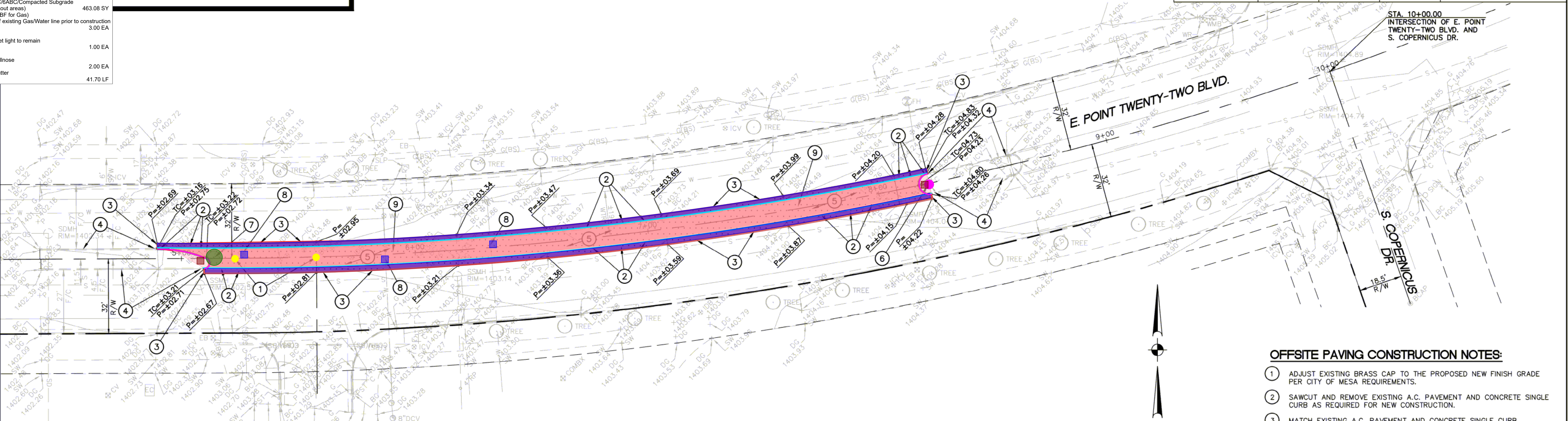


H

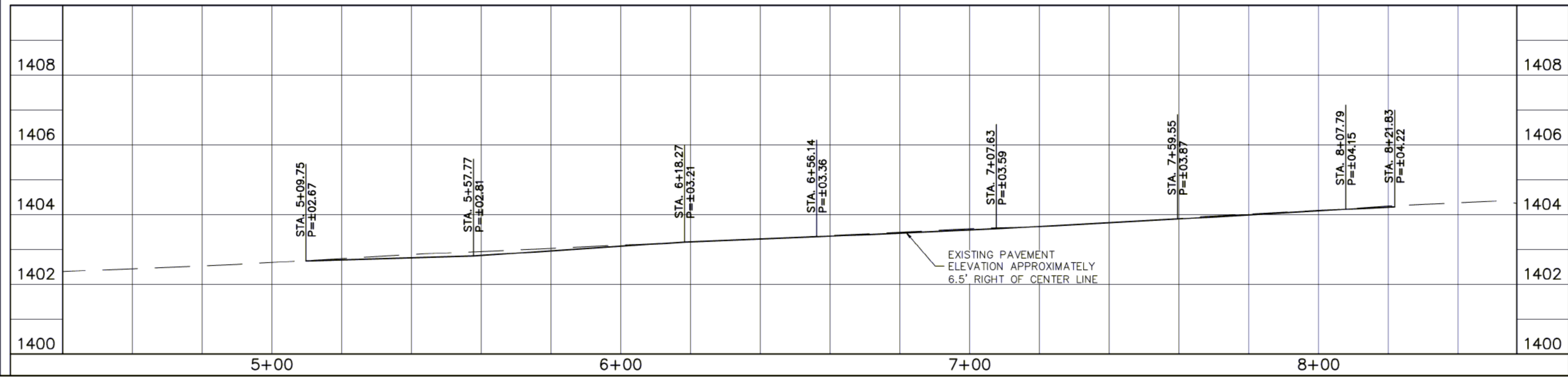
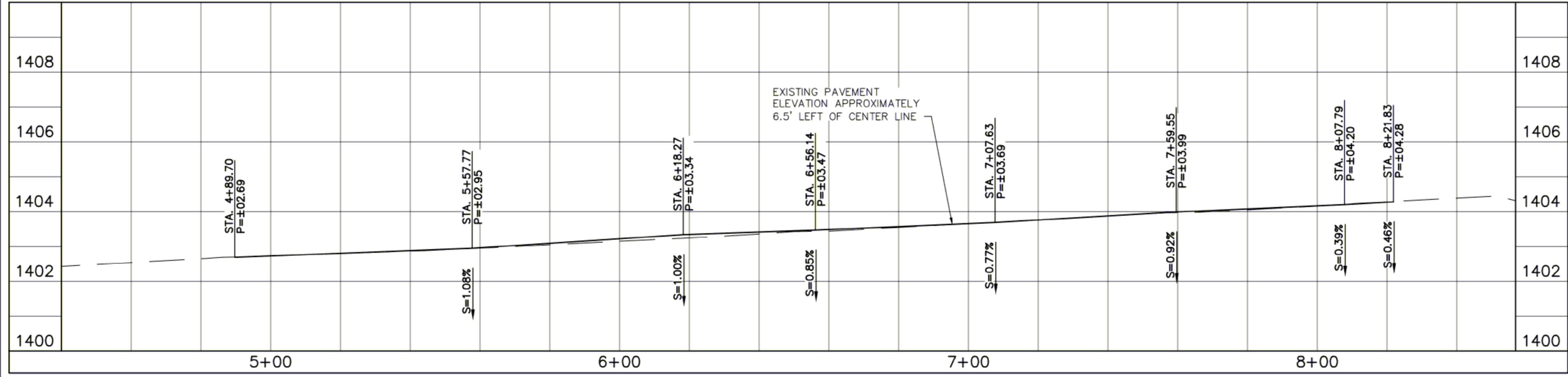
R

HESS - ROUNTREE, INC.
CONSULTING ENGINEERS & LAND SURVEYORS
9831 SOUTH 51ST STREET, SUITE C110
PHOENIX, ARIZONA 85044 (480)496-0244

DES. **VR** DRN. **ANM** CKD **PMJ** JOB NO. **2302-18B**



E. POINT TWENTY-TWO BLVD.



- OFFSITE PAVING CONSTRUCTION NOTES:**
- ADJUST EXISTING BRASS CAP TO THE PROPOSED NEW FINISH GRADE PER CITY OF MESA REQUIREMENTS.
 - SAWCUT AND REMOVE EXISTING A.C. PAVEMENT AND CONCRETE SINGLE CURB AS REQUIRED FOR NEW CONSTRUCTION.
 - MATCH EXISTING A.C. PAVEMENT AND CONCRETE SINGLE CURB ELEVATION AND LOCATION.
 - EXISTING CONCRETE SINGLE CURB TO REMAIN. PROTECT FROM DAMAGE.
 - INSTALL ASPHALTIC CONCRETE PAVEMENT 3.5" A.C. (R-1/2") OVER 6" A.B.C. OVER COMPACTED SUBGRADE (CITY OF MESA STANDARD DETAIL NO. M-19.01).
 - EXISTING STREET LIGHT TO REMAIN. PROTECT FROM DAMAGE.
 - REMOVE EXISTING TREE.
 - FIELD VERIFY ELEVATION AND LOCATION OF EXISTING GAS/WATER LINE PRIOR TO CONSTRUCTION. PROTECT FROM DAMAGE.
 - REMOVE EXISTING TREES, SHRUBS, LANDSCAPE MATERIAL AS REQUIRED FOR NEW CONSTRUCTION.



OFFSITE PAVING PLAN AND PROFILE			
QUEEN CREEK UNIFIED SCHOOL DISTRICT NO. 95			
OFFSITE IMPROVEMENTS AT EASTMARK HIGH SCHOOL			
DRAWING STATUS	SHEET	OF	OP-3
PROGRESS SET			
DATE: 07-12-23	3	3	